

加勢裕三杯
モントル 2024
 MONTRE 2024
 6.7-9

2024 FIA Asia-Pacific Rally Championship Rd.3
 2024年JAF全日本ラリー選手権第5戦



ENGLISH



Rally Guide 2

FIA
**ASIA-PACIFIC
 RALLY
 CHAMPIONSHIP**



<https://rally-montre.com>

TOYOTA MOTORSPORTS CLUB
TMSC



MOSCO



GR TOYOTA
 GAZOO
 Racing



PROGRESSIVE EQUIPMENT
CLUSCO

This document has no regulatory power - for information only.

Contents

1 Overview			
1.1 Rally Overview	4		
1.2 Introduction	5		
1.3 Venue	6		
1.4 MONTRE 2024 Concept of the event	9		
2 Organisers' contact details			
2.1 Secretariat	10		
2.2 Rally HQ	10		
2.3 Media office and how to apply	10		
2.4 Organiser	10		
2.5 Meet officials and competition officials (tentative)	11		
3 Programme APRC/JRC (planned)			
3.1 Schedule before the start of the competition	12		
3.2 Schedule during the Rally	12		
4 Service Park			
4.1 About the Service Park	13		
4.2 Service application notes	13		
4.3 Fuels and paraffin to Service Parks			
About bringing your own	13		
4.4 Notes on Service Parks	13		
5 Radio	13		
6 Fuel/tyres			
6.1 Fuel	13		
6.2 tyres	14		
7 Procedures required to bring vehicles and parts to Japan and to operate			
7.1 Japanese law / Customs clearance procedures	14		
7.2 Regulations pertaining to vehicles	15		
7.3 Conditions for driving in Japan	15		
8 Helicopters	16		
9 Hospitality	16		
10 Hotels / Accommodation	16		
11 Reconnaissance	16		
11.1 Recce procedure	16		
11.2 Precautions, restrictions and regulations during the Recce	16		
11.3 Number of passage	16		
11.4 Location of tracking device receipt.	16		
11.5 Traffic regulation	17		
11.6 GPS tracking devices	17		
12 Scrutineering, sealing and marking, advertising			
12.1 Official scrutineering (APRC)	17		
12.2 Official scrutineering (JRC)	18		
12.3 Post-rally scrutineering (APRC)	19		
12.4 Post-rally scrutineering (JRC)	19		
12.5 Advertisements and rally plates	19		
13 Test Run	1		
14 Shakedown	1		
15 Start	1		
16 Finish	1		
17 Promotion			
17.1 Rally Park	20		
17.2 Media Conference	20		
17.3 Ceremonial start	20		
17.4 Ceremonial finish	20		
17.5 Final Press Conference	20		
18 Media.	20		
19 Health and safety services			
19.1 Emergency services	21		
19.2 Medical facilities	21		
19.3 Towing service	23		
20 General information			
20.1 Annaka City area	23		
20.2 Takasaki City area	23		
20.3 Fujioka City area	24		
20.4 Tomioka City area	24		
20.5 Kanna Town area	24		
20.6 Ueno Village Area	25		
20.7 Nanmoku Village area	25		
21 List of useful information and services			
21.1 Special Stage	26		
21.2 To sponsors and Rally Parks			
Enquiries about exhibition, etc.	26		
21.3 Train	26		
21.4 Time zone	26		
21.5 Sunrise / sunset	26		
21.6 Average temperature	26		
21.7 Currency	26		
21.8 Taxes	27		
21.9 Tip.	27		
21.10 Electricity	27		
21.11 Mobile telephone	27		
21.12 Embassy	27		
21.13 Visas and immigration control	27		
Appendix 1 ITINERARY	28		
Appendix 2 MAP	31		
Appendix 3 OTHER.	39		

1 Overview

1.1 Rally overview



Name of competition	MONTRE 2024	
Competition Title	FIA Title <ul style="list-style-type: none"> - <i>FIA Asia Pacific Rally Championship for Drivers and Co-Drivers</i> - <i>FIA APRC Asia Cup for Drivers and Co-Drivers</i> - <i>FIA APRC Pacific Cup for Drivers and Co-Drivers</i> - <i>FIA Junior APRC Championship for Drivers</i> - <i>FIA APRC3 Championship for Drivers and Co-Drivers</i> - <i>FIA APRC4 Championship for Drivers and Co-Drivers</i> JAF Title 2024 JAF Japanese Rally Championship	
Competition rating	FIA-approved international rating FIA Approval Number 03APRC/240410 Issued on 10 April 2024 JAF-approved Classification JAF Approval No. 2024-1110 Issued on 01 March	
Date and time	7 (Fri) - 9 (Sun) June 2024	
Competition	Special Stage Rally	
SS Course overview	Pavement (tarmac)	
SS Total distance and number	Total distance approx.	106.22km
	Number of SS	10
Organisers ∴	JAF-accredited club JAF member club JAF member organisation	Toyota Motorsports Club (TMSC) Jyoshu Auto Club (JAC) NPO MOSCO (MOSCO)
	Supported by. Gunma Prefecture - Annaka City - Takasaki City - Fujioka City - Tomioka City - Kanna Town – Kanra Town - Ueno Village - Nanmoku Village	
	Cooperations : Gunma Toyota Motor Corporation - IPF Corporation - Nukabe Corporation - K.I.T. Service Company Ltd.- Carrosser Co. Ltd.	
	Cinq - JMRC Kanto Rally Committee - JMRC Gunma Rally Committee - JMRC Saitama Rally Committee	

1.2 Introduction.

Prior to 1983, the Japanese Rally Championship was held in Gunma Prefecture under the name "Autumn Yamabiko Rally".

In 1984, the rally was renamed "Montre" after the many rally teams in Gunma Prefecture joined forces to organise it. At the time, the rally was held around the "Three Jomo Mountains" of Mount Akagi, Mount Haruna and Mount Myogi in Gunma Prefecture, so the French term "three famous peaks" (mont tres) was changed to the Latin term (Montre), and the rally was held in Gunma Prefecture. The name "Montre" was adopted for the Japanese Rally held in Gunma Prefecture, which is now known as "Montre".

Held annually from 1984 to 2003, the "Montre" rally has produced many famous rally drivers, but has also produced a number of famous rally drivers,

The event had been held every year with much drama, but was suspended from 2004 to 2011 due to an accident that occurred in 2003. During that time, the rally environment in the prefecture was reformed and the safety and operational systems were rebuilt. The following year, 2013, a similar scale event was held in Shibukawa, attracting a large number of spectators over a two-day period.

From 2014 to 2017, the rally was moved to Tsumagoi Village in Gunma Prefecture, known as the "birthplace of motorsport", with the aim of holding a highly competitive rally. The rally attracted a lot of attention and many people enjoyed watching the rally.

From 2018, the road surface has been changed from tarmac to gravel, resulting in an event with even more rally appeal, In 2019, the event was held under the title FIA APRC ASIA RALLY CUP.

The 2020 event was cancelled due to the impact of the COVID19.

From 2021, the rally field has been moved to the south-west of Gunma, and the event has been held in a setting that offers a rally experience not available at many Japanese rally events.

For 2024, the rally base will be moved to Annaka with the cooperation of Annaka City, and a special stage will be set up on the old road of the Usui Pass, made famous in the anime. We have started preparations for the event.

Carrosser Corporation, which was founded in Annaka City in 1977 as a rally shop, has agreed to sponsor the Montre 2024 event. The event will be named after the late Yuji Kase, founder of the company and a great contributor to the development of the Japanese rally industry. We will do our utmost to ensure that all entrants, galleries and the local community can enjoy a safe and exciting rally.

MONTRE 2024
Organising Committee of the Rally



1.3 About the MONTRE 2024 host city

1.3.1 Annaka City

Annaka is a core city located in the north-west of the Kanto Region, slightly south-west of central Gunma Prefecture.

It has long been located on the Nakasendo Highway, and during the Edo period, the post towns of Itabana, Annaka, Matsuida and Sakamoto flourished, and the Usui Sekisho, an important barrier on the Nakasendo Highway, was also located in what is now Yokogawa.

The city of Annaka is known as the birthplace of the 'onsen mark', Isobe Onsen, the Usui Pass Railway Cultural Village and Yokogawa, famous for its Kamameshi (rice) from the pass, are located in the city, as are the former Niiijima-jo Residence, the former Annaka Clan samurai tenement house and the Goryo Chaya Honjin. In May, one month before the MONTRE event, the Ansei Excursion Samurai Marathon (approx. 20 km from the samurai row houses in Annaka city centre to Sakamotojuku on the old Usui Pass Road) is held every year, where people can run in costume. (Some years the event is not held due to COVID 19).



1.3.2 Fujioka City

Located in the south-west of Gunma Prefecture, Fujioka City has a total area of 180.29km², with Mount Akaguna (1,522m), Mount West Mikabo (1,286m) and Mount East Mikabo (1,246m) in the western part of the city and Shimokubo Dam in the southernmost part, and with the Ayukawa, Kabura, Karasu and Kanna rivers flowing through the city area, it is a beautiful city blessed with greenery and clear streams.

Fujioka City, which has prospered since ancient times, has many historic sites from the Stone Age and Kofun period. In the Muromachi period (1336-1573), Yamauchi Uesugi Norizane, who held the post of Kanto governor, built Hirai Castle. During the Edo period (1603-1868), the city flourished as a centre for the Hino silk industry, and after the Meiji period (1868-1912) it developed as a leading centre for sericulture, as represented by the Takayama Company, and as a centre for timber production.

The main tourist attraction is Sakurayama Park, which is open from November to December.

The 7,000 winter cherry trees bloom daintily through the month of May. The double-blooming winter cherry trees, which also bloom in spring, are designated as a national scenic beauty spot and a natural monument. From late April to mid- May, the 250 m long wisteria trellis at Fuji no Saku Oka is filled with wisteria flowers, delighting the eyes of many visitors. The area is also home to the 'Takayama Shrine Site', which was inscribed as a World Heritage Site in 2014 as part of the 'Tomioka Silk Mill and Silk Industrial Heritage Group'.



1.3.3 Takasaki City

Takasaki is a core city located in the north-west of the Kanto Region, slightly south-west of central Gunma Prefecture.

The city has long been a strategic transportation hub, being the junction of the Nakasendo (National Routes 17 and 18) and Mikuni Kaido (Gunma Prefectural Route 25, Takasaki Shibukawa Line), the Kan-etsu Expressway and Kitakanto Expressway, and the Joetsu Shinkansen and Hokuriku Shinkansen lines. Takasaki Station, where the Shinkansen stops, is also the gateway to Maebashi City, the capital of Gunma Prefecture, and is the transportation center of Gunma Prefecture.

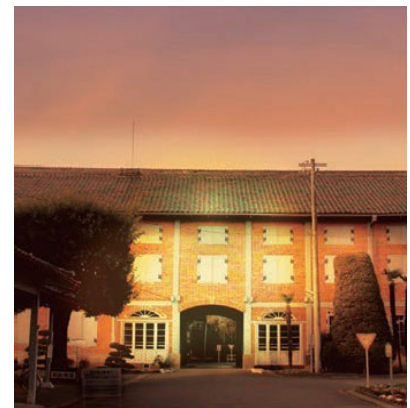
In addition, Takasaki City has long been active in music-related activities, which has led the city to be known as 'Takasaki, the city of music' and the birthplace of the Gunma Symphony Orchestra, the pioneer of regional orchestras in Japan and the third longest-standing professional orchestra in Japan with more than two dozen groups. The Gunma Symphony Orchestra is still based there today, and it is the only city in Japan that is neither one of the three largest metropolitan areas nor the prefectural capital to have its own orchestra. The Gunma Music Centre, built in 1961 with the city's own budget and donations from the public, is also an iconic institution.



1.3.4 Tomioka City

Tomioka City is located on the north-western edge of the Kanto Plain, with the Kabura River flowing from west to east through the centre of the city, and Mount Myogi, one of Japan's three most spectacular landforms, on the western edge of the city. Myogi, with its beautiful cherry blossoms in spring and red leaves in autumn. The Tomioka IC of the Joshinetsu Expressway is located within the city and there are seven railway stations on the Joshin Line of the Jyoshin Electric Railway.

Tomioka City also has the World Heritage-listed Tomioka Silk Mill in the city's urban area and the 1500-year-old Ichinomiya Nukisaki Shrine near Ichinomiya Station on the Jyoshin Electric Railway Jyoshin Line in the city. There is also the Prefectural Museum of History in the north of the city and the Gunma Safari Park in the south.



1.3.5 Kanna Town

Kanna Town is located in south-west Gunma and is blessed with 'water' and 'greenery', with the Kanna River, which boasts the highest water quality in the Kanto region, flowing from east to west and surrounded by the mountains of the nature-rich West Jyoshu.

Kanna Town is famous as the 'Dinosaur Kingdom', as it was the first place in Japan where dinosaur footprint fossils were discovered. The town is also known as the originator of the first 'Koinobori' (carp streamer) event in Japan.

In spring, we welcome you to the "Koinobori Festival" where 800 carp streamers swim majestically in the sky, in summer to the "Kanna-no-Ryo" where you can enjoy the clear Kanna River, in fall to the "Kanna Mountain Run & Walk" where runners run around in the red-colored mountains of West Jyoshu, and in winter to the "Kanna Winter Illumination" where you can enjoy illumination using carp streamers that you cannot see anywhere else.



1.3.6 Ueno Village

Ueno Village is located in the southwestern most part of Gunma Prefecture, adjacent to Kanna Town in Gunma Prefecture in the east, Nanmoku Village in Gunma Prefecture in the north, Sakuho Town, Kita-Aiki Village, Nanmoku Village, and Kawakami Village in Nagano Prefecture in the west, and one city, two towns, and three villages in Chichibu, Saitama Prefecture in the south.

The village area is surrounded by 1,000- to 2,000-meter- high mountains such as the Mikabo-Arafune Mountain Range and the Mikuni Mountain Range, with steep mountains and fields covering more than 90% of the total area of 181.86 km^2 , forming a typical mountain village environment.

The main roads are National Route 299 along the Kanna River and National Route 462 following it, which take about 80 minutes each to the Fujioka and Chichibu urban areas, and about 40 minutes to the Shimonita Interchange on the Jyoshinetsu Expressway via the Yunosawa Tunnel. The Kanna River, which flows through the center of the village, belongs to the Tone River system, which provides water resources for the Kanto region, and is made up of numerous mountain streams that originate in the deep mountains. It's clear and rich streams nurture iwana (char) and yamame (landlocked salmon), which are mountain stream fish of the salmon family, and breeding sculpin can be seen in the river. In addition, the Kanna River was certified as the "cleanest river in the Kanto region" in a water quality survey conducted by the Ministry of Land, Infrastructure, Transport and Tourism for four consecutive years from 2004 to 2007, and in 2008, the "Kanna River headwaters" in the village area was selected as one of the "100 best waters of the Heisei era" by the Ministry of the Environment.

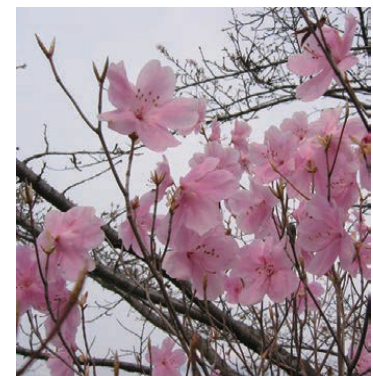
In order to preserve the rich nature of Ueno Village, which still retains its prehistoric appearance, for future generations, we will make efforts to protect and maintain it, and to achieve the stable existence of the Ueno Village community. In order to achieve this goal, we are striving to create a village that attracts many people who wish to settle down.



1.3.7 Nanmoku Village

Nanmoku Village is a mountain village 15 km east-west and 8 km north-south, surrounded by mountains from 800 m to around 1,400 m above sea level.

In spring, go hiking, gathering wild vegetables and wildflowers in the fields where Katakuris and Hitotsubana. In summer, go fishing, playing in streams and visiting waterfalls in mountain streams where char and landlocked salmon are abundant. In autumn, enjoy the autumn colors of the leaves while gathering mushrooms and nuts. In winter, go hiking in the sun while stepping on dead leaves. Why not experience the changing natural time of Nanmoku in each of the four seasons, surrounded by the heart of Mother Nature?



1.5 MONTRE 2024 Concept

"Montre" is held in Gunma, the most active rally area in Japan, and along with the Rally of Tsumagoi in February, it is the most popular All-Japan rally in the metropolitan area, and is said to be a coveted event in which rallyists from all over the country aim to compete. The event is run with the understanding and cooperation of the local government, local residents, police, and other related government agencies.

This year, Toyota Motorsports Club, Jyoshu Auto Club, and NPO MOSCO will be in charge of the overall management of the event, and the "Montre 2024 Organizing Committee" will be formed by elected management executives from the Kanto area, The committee is now preparing to build an exciting and attractive rally for participants in Annaka and Fujioka cities, Takasaki, Tomioka, Kanna, Ueno, and Nanmoku villages in the southwestern part of Gunma Prefecture.

Montre has been attracting many spectators (galleries) as the closest Japanese Championship Rally event to the Tokyo metropolitan area, and with the addition of the FIA APRC ASIA RALLY CUP title. And also, before the spread of the COVID 19, Rally of Tsumagoi had a great success with approximately 20,000 galleries in the spectator stages and rally park over the two days.

This year, the rally will be held in the western part of Gunma Prefecture, centered on Annaka City, which is easily accessible from the Tokyo metropolitan area. We will post information about the spectator stages and the rally park on our website as needed, please check our website for information on spectator stages and the rally park.

This year, the event will be based in the western part of Gunma Prefecture, centred on Annaka City, and will be easily accessible from the Tokyo metropolitan area.



2 Organisers' contact details

2.1 Secretariat

MONTRE 2024 Rally Secretariat (in NPO MOSCO Takasaki office)
2458-1, Kuragano-cho, Takasaki, Gunma 370-1201
tel 027-386-4365 / fax 027-386-4375
Website: <https://rally-montre.com>
Email: office@rally-montre.com



2.2 Rally HQ

Annaka Shinkumi Sports Centre
1531-1 Annaka, Annaka, Gunma 379-0116
Rally HQ dedicated phone TEL 027-386-4365 (call forwarding)
Website: <https://www.city.annaka.lg.jp/page/2388.html>



2.3 Media office and application procedure

MONTRE Media office (in NPO MOSCO Takasaki office)
2458-1, Kuragano-cho, Takasaki, Gunma 370-1201
tel 027-386-4365 / fax 027-386-4375
<https://rally-montre.com/media>
Email: media@rally-montre.com



To cover MONTRE 2024, you need to pre-register.

Pre-registration From 10 April to 16 May 2024 on the 'Media page on the MONTRE website'

Register at: <https://rally-montre.com/media>

2.4 Organisers

Toyota Motorsports Club (JAF Approved Club 13001)
Toyota Kudan Building B1, 2-3-18 Kudan Minami, Chiyoda-ku, Tokyo 102-0074, Japan
tel 03-3221-9950 fax 03-3221-9924
Website: <https://toyota-motorsports-club.jp>



JAC (JAF affiliated club 10003)
128-2, Kamikobayashi-cho, Ota-shi, Gunma 373-0024
tel 0276-25-0114 fax 0276-25-6996



NPO MOSCO (JAF Member Organisation 10003, abbreviated as MOSCO)
2458-13, Kuragano-cho, Takasaki, Gunma 370-1201
tel 027-386-4365 fax 027-386-4375
Email: office@n-mosco.com



2.5 Officials and Staffs

Organizing committee

Chairperson of the organizing committee	Haruo Takakuwa	(Board Chairperson of NPO M.O.S.C.O.)
Organizing committee member	Masanori Sekiya	(Chairperson of Toyota Motor Sports Club)
	Takayuki Koseki	(President of Jyoshu Auto Club)
	Hiroshi Suzuki	(MOSCO)
	Mamoru Namiki	(President of NPO Gunma Rally Network)

Stewards

Chairperson of the APRC Steward	Willard MARTIN (NZL)
APRC Steward	Manoj DALAL(IND)
APRC Steward	Kunihiro TABATA (ASN)
APRC Steward Secretariat	Akira KAWADA
FIA Observer	Manoj DALAL (IND)
Chairperson of the JAF Steward	Takahito MIYAGI (JAF)
JAF Steward	Tadayoshi SATO (JAF)
JAF Steward	Takahisa OGUCHI (Org.appointed)
JAF Observer	Shigeyuki GOTO (JAF)
JAF Observer	Jun FUNAKOSHI (JAF)
JAF Technical Advisor	Takuya SUGIMURA (JAF)

Senior official

Clerk of the Course (COC)	Mitsuhiro FUJITA	(MOSCO)
Deputy Clerk of the Course (DCOC)	Sadatoshi ANDO	(MOSCO)
Deputy Clerk of the Course (DCOC)	Nao ONODERA	(MOSCO)
Assistant Clerk of the Course (Course)	Yukinori FUKUMURA	(Umegumi)
Assistant Clerk of the Course (timekeeping)	Naoki KUROSAKI	(PRESTIGE)
Assistant Clerk of the Course (Results)	Masaya YAMAGUCHI	(MOSCO)
Chief Scrutineer	Toshiaki ORIHARA	(RSCC)
Chief Secretariat	Motokuni HORIGUCHI	(CORSA)
Media Officer	Masayoshi NAKAJIMA	
Chief Safety Officer	Hirokazu SOMEMIYA	(RallyStream)
Chief Medical Officer	Hitoshi ATOMI	(Surgeons)
Service Park Coordinator	Hiroshi TAKAHASHI	(MOSCO)
Web Coordinator	Takayuki KOSEKI	(JAC)
Competitor Relations Officer (CRO)	Naoto MARUYAMA	(MSCC)

3 Programme APRC/JRC

3.1 Schedule before the start of the competition

13 May (Monday)	
Publication of Rally Guide 2.	Official website /Sportity
16 May (Thursday)	
Entry closed	Rally Secretariat
Media applications closed	Media Secretariat
28 May (Tuesday)	
Entry list published	Official website /Sportity
2 June (Sunday)	
Road book - route map publication	Rally Secretariat

3.2 Schedule during the Rally

Thursday 6 June.		
14:00 - 21:00	Rally HQ Open	Annaka Shinkumi Sports Centre.
15:00 - 20:30	Service Park opened.	Annaka Shinkumi Sports Centre parking lot
15:00 - 20:00	Service reception 1	Rally HQ.
16:00 - 20:00	Admin Check 1/ Recce registration/ Distribution of road books and other materials	Rally HQ.
Friday 7 June		
05:00 - 20:00	Rally HQ Open	Annaka Shinmumi Sports Centre.
05:00 - 19:30	Service Park opened.	Annaka Shinkumi Sports Centre parking lot
05:30 - 08:00	Admin Check 2/ Recce registration/ Distribution of road books and other materials	Rally HQ.
06:00 - 11:00	Service reception 2	Rally HQ.
06:30 - 17:10	Recce start - end	
08:00 - 12:00	Media Reception	Media centre.
09:00 - 17:00	Official Scrutineering	Scrutineering area
12:00 - 12:30	Media briefing	Media centre
17:00	First Steward Meeting	Steward room
17:30 - 18:00	Press conference	Media centre
18:00	LEG1 Start list issued.	Official website /Sportity
8 June (Saturday)		
06:00 - 21:30	Rally HQ Open	Annaka Shinmumi Sports Centre.
06:00 - 21:00	Service Park opened	Annaka Shinkumi Sports Centre parking lot
08:30 ~	Rally start	Annaka Shinmumi Sports Centre
20:33 - (tentative)	LEG 1 Finish (Parc Ferme IN)	Annaka Shinkumi Sports Centre parking lot.
22:00 (scheduled).	LEG 2 Start list issued	Official website /Sportity
9 June (Sunday)		
05:00 - 20:30	Rally HQ Open	Annaka Shinmumi Sports Centre.
05:00 - 20:00	Service Park opened.	Annaka Shinkumi Sports Centre parking lot.
06:00 ~	LEG 2 start (Parc Ferme OUT)	Annaka Shinkumi Sports Centre parking lot.
16:12 - (tentative).	Rally Finish & Podium Ceremony	Annaka Shinkumi Sports Centre parking lot.
16:30 - (tentative).	Post-rally scrutineering (APRC)	Scrutineering area
16:45 - (tentative)	Post-rally scrutineering (JRC & other)	Scrutineering area
17:00 - 17:30	Final press conference	Media centre\
17:00 (scheduled)	Provisional results publication	Official website /Sportity

4 Service Parks

4.1 About the Service Park

The Service Park will be located in the parking lot of the Annaka Shinkumi Sports Centre, Annaka, Gunma.

The road surface is paved.

The Service Park will open at 15:00 on Thursday 6 June.

*No entry to the Service Park before hours at all.

*See Appendix 3 for layout, etc.

4.2 Notes on service applications

As there is no space available in the Service Park at this time, requests for additional space will not be accepted. For joint services with other teams, please apply in advance at the time of application.

4.3 Gasoline and paraffin in Service Park

Gasoline and paraffin must be brought into the Service Park in metal carrying cans, with a maximum of 40 litres per team. Please take care to avoid fire when storing these items.

4.4 Notes on Service Park

There are no parking spaces for service-related vehicles in the Service Park other than the spaces allocated to participants. Large vehicles such as loading vehicles and other vehicles for transportation as stated in the service application must be parked in the designated areas. Parking spaces are limited, so be sure to apply for a vehicle on the service application. Service Parks can be subject to gusty winds, so please be prepared to wear clothing that can cope and take measures to prevent service tents and other equipment from being blown away by strong winds.

There are no litter bins in the Service Parks, so please make sure you take all your rubbish home with you.

Smoking is not permitted in the Annaka Shinkumi Sports Centre, except in the smoking areas.

When jacks, rigid racks, etc. are used, use a shingle or similar to protect the pavement surface.

Protect the pavement surface with blue sheets or similar to avoid contaminating the pavement during vehicle maintenance.

Fires are strictly prohibited in the Service Park.

5 Radio

The use of radio in Japan is strictly regulated. If you wish to use a radio device, please fill in the radio station application form and submit it to the Secretariat by 30 April with the required information on the frequency, model number and output power of the device concerned.

Some submitted radio station applications may not be available in Japan.

6 Fuel / Tyres

6.1 Fuel

APRC participants are permitted to use FIA fuel that complies with Article 252.9 of Appendix J of the FIA International Sporting Code. In such cases, participants must make their own arrangements and bring their own fuel to the location designated by the organiser.

Refuelling from the end of the official scrutineering to the rally finish is only allowed at the refuelling points designated by the organisers listed in the Road Book.

6.2 Tyres

To comply with 13 of the 2024 FIA Regional Rally Sporting Regulations and 13 of the V4 FIA Asia-Pacific Rally Championship.

6.2.1 Tyre used

Hand-cutting and changes to the tread pattern are permitted. Tyre marking will not be carried out, but tyres will be checked for conformity with the rules at all times. Participants using hand-cut tyres must submit an image of the hand-cut tyres or be available to have their tyres photographed by the scrutineer.

6.2.2 There shall be no limit to the number of pieces used. However, if a driver is applying for points in the Japanese Championships, the following in accordance with chapter 6.2.3.

6.2.3 Applicants wishing to obtain points for the Japanese Rally Championship.

Participants wishing to obtain points in the Japanese Rally Championship must follow the Supplementary Regulations for this event (JRC Edition chapter 7.2) for tyre regulations and the number of wheels used.

6.2.4 Tyre worming up

Any tyre warming (e.g. meandering, sudden acceleration and deceleration, etc.) in the liaison section is strictly prohibited. Crews that engage in tyre warming in the liaison sector will be reported to the Stewards and penalties up to disqualification will be applied.

7 Procedures required to bring the vehicle and its parts to Japan and to drive it.

7.1 Japanese law / customs clearance procedures

The following documents and points to note are required for customs clearance procedures.

(1) FIA Carnet

The FIA Carnet is required whenever a vehicle registered abroad, such as a rally car, Recce vehicle or Service vehicle, is driven in Japan. The carnet is issued by the ASN of the country where the vehicle is registered. When clearing customs with the FIA Carnet, a Carnet Certificate issued by the JAF is required. Please contact your organiser to obtain this certificate. The carnet and this certificate may be required to be presented by the police or other authorities while the vehicle is in use. Please be prepared to show them at any time. All vehicles on public roads must have liability insurance, regardless of the country of registration of the vehicle in question. (This is currently being coordinated by ATA Carnet with the relevant ministries, but only in the following Geneva Convention-registered countries).

Note: If you are importing a vehicle from a country outside the Geneva Convention ('Convention on Road Traffic', 1949, Geneva), the vehicle must be inspected and registered in Japan on arrival, even if it has an FIA Carnet. This scrutineering and registration is time-consuming and expensive.

*If the vehicle is to be used by someone other than the carnet holder, the vehicle must be notified in advance with the prescribed application form at customs clearance in Japan.

(2) ATA Carnet

ATA Carnet is required when bringing in equipment, parts, tyres and promotional items. All items imported with ATA Carnet must be re-exported after the rally. Prohibited items cannot be imported, even temporarily.

(3) PRO FORMA INVOICE

Ask the organiser or the individual transport company about the use of PRO FORMA INVOICE. The above documents are required when obtaining special authorisation for the import of dangerous goods such as high-pressure gas cylinders and medical supplies. For these imports, you will need to follow your own procedures.

7.2 Rules pertaining to vehicles

Vehicles participating in this rally must comply with Japanese domestic regulations such as the Road Trucking Vehicle Law - Road Traffic Law, and must conform to the International Sporting Code Appendix J or JAF National Technical regulations (light pods, exhaust volume, etc.).

7.2.1 Class division

7.2.1.1 APRC Asia Cup/ Pacific Cup

Vehicles eligible to participate are those that conform to Article 12 of the 2024 FIA Regional Rally Regulations and Article 12 of the 2024 FIA Regional Rally Regulations V4 (APRC) (including national/regional cars permitted to participate) and the vehicle class is indicated in Article 12.1 of the 2024 FIA Regional Rally Regulations. The vehicle classes are as set out in Article 12.1 of the 2024 FIA Regional Rally Sporting Regulations.

Participants who wish to earn points for the APRC ASIA RALLY CUP or APRC PACIFIC RALLY CUP must register with the APRC in advance via the URL below by the application deadline.

<https://rally-montre.com/competitors>

Participants who wish to participate in the APRC ASIA RALLY CUP or APRC PACIFIC RALLY CUP and also wish to obtain points for the 2024 JAF Japanese Rally Championship must also follow the Japanese Rally Championship regulations in Appendix 7 of the Supplementary Regulations.

7.2.1.2 Japanese Rally Championships

Vehicles complying with the 2024 Japanese Rally Championship Regulations, Chapter 2, Japanese Championship, Articles 7 and 8. Classifications shall be JN1, JN2, JN3, JN4, JN5 and JN6.

7.2.1.3 Other classes.

In addition to vehicles compliant with the 2024 JAF Japanese Rally Championship, RF vehicles may also participate.

7.2.2 Vehicles registered abroad

For vehicles not registered in Japan, the following documents (a) and (b) are required and must be carried on board the vehicle. (c) is recommended for rally cars.

(a) Carnet certification document (translated) issued by JAF and distributed by the organiser. This document has the effect of authorising the temporary importation of the vehicle. For rally cars, this is included in the entry fee; for non-rally cars, a fee is charged.

(b) Liability insurance. For rally cars, this is included in the entry fee. For vehicles not registered in Japan other than rally cars, liability insurance can be purchased for approximately JPY 6,500.

(c) Rally insurance. It is recommended to take out this insurance for rally and recce vehicles. It also includes third-party liability insurance and costs approximately JPY25,000, depending on cylinder volume.

There is a section on importing vehicles in the entry booklet of the entry form. For subscriptions (b) and (c) above, please provide details about the vehicle.

7.3 Conditions for driving in Japan

In order to drive in Japan, a foreign visitor must have a Japanese driver's licence or be able to drive on public roads.

The driver must hold an international driving licence valid for the international driving licence was concluded in 1949.

Only licences issued under the Geneva Conventions are valid and must be clearly marked on the front cover. Please contact the organiser for more information.

Participants with licences issued in Germany, France, Switzerland, Italy, Belgium and Taiwan will need to have their licences translated by the JAF. Carrying this translation and the licence at the same time has the same effect as an international driving licence issued under the Geneva Convention.

Participants who hold licences from Geneva Convention countries and licences other than those listed above are required to switch to a foreign exemption. For more information on switching foreign exemptions, please visit this website.

English: <http://www.jaf.or.jp/e/switch.htm>

Japanese: <http://www.jaf.or.jp/inter/translation/index.htm>

8 Helicopters

All helicopters flying in support of the rally must be registered with the organisers. Only registered aircraft are permitted to fly in the rally airspace. Participants and media wishing to fly helicopters must notify the organisers. Please note that all flight plans will be managed by the Chief Safety Officer, and helicopter flights for emergency medical services will be given priority in all cases.

9 Hospitality

For more information on corporate hospitality, please contact the Secretariat.

10 Hotels / Accommodation

Accommodation is not included in the entry fee and should be arranged on your own. Please see pages 23-25 of this document.

11 Recce

11.1 Recce Procedure.

11.1.1 Recce will be held on Friday 7 June for competing crews under the control of the organisers. Recce registration will take place at the same time as Administrative Check, from 16:00 to 20:00 on Thursday 6 June and from 5:30 to 8:00 on Friday 7 June at Rally HQ, where each crew will receive a Recce Card and Vehicle Identification Card.

11.2 Precautions/restrictions/regulations during the wreck

11.2.1 No livery vehicles shall be used, except for the rally cars used in this competition. Participants must make their own arrangements.

11.2.2 Each crew member must affix a vehicle identification card during the recce.

11.2.3 During the recce period, the maximum speed limit for special stages is 60 km/h. However, this does not apply if traffic signs, road books or bulletins indicate a lower speed limit.

11.2.4 Competitors must drive in such a way that they do not cause danger or inconvenience to other traffic or residents in the vicinity of the stage. Strict enforcement measures will be taken to prevent speeding and other road offences. Exceeding the speed limit while recce will be fined by the Clerk of the Course (Article 34.2.2 of the FIA Regional Rally Sporting Regulations 2024)

11.3 Number of times through the Recce

Each crew may run each special stage twice. However, a special stage that uses the same section more than once shall be considered as one stage and shall be run twice in one place.

11.4 Location of receipt of tracking devices

Tracking and speed monitoring in recce is done using the smartphone device 'RallyStream'. This also applies during rally competitions. Receive the dedicated smartphone during the Administrative Checks at the Rally HQ. See article 3.2 for the schedule.

11.5 Traffic regulation

- 11.5.1** During the recce, competitors must comply with all traffic laws and regulations, as well as any instructions of the organisers as notified in the Supplementary Regulations or in Bulletin. In all cases, they must respect the safety and rights of other road users. Officials may monitor the operation of the recce vehicles on the recce route visually or by means of measuring equipment, photo-video, etc. All infringements will be reported to the Steward committee and penalties may be imposed up to and including not being able to start the rally.
- 11.5.2** Do not exceed the legal speed limit on special stages and on all roads during the Recce. Violations of this will be penalised by the Stewards in accordance with article 20.2 of the 2024 FIA Regional Rally Sporting Regulations.

11.6 GPS tracking devices

GPS safety tracking systems

For MONTRE 2024, a GPS safety tracking system will be fitted to all participating vehicles for safety and competition progression reasons.

The GPS safety tracking system to be used is RallyStream and all participants will be lent a dedicated terminal for a fee. All participants will receive the device upon Administrative Checks and must install it on their recce vehicle and on the rally cars.

12 Official scrutineering, sealing and marking

12.1 Official scrutineering (APRC)

12.1.1 Official Scrutineering location and date

Location: parking lot of Annaka Shinkumi Sports Centre

Date: 7 June 2024 (Friday) 9:00~17:00

Marking of all vehicle gearboxes and differentials and spare gearboxes and differentials and turbocharger sealing of all turbocharged vehicles will be carried out simultaneously with the official scrutineering in accordance with the scrutineering schedule of communications issued on or before 6 June 2024.

12.1.2 Mud flap

Rally cars may be fitted with mud flaps in accordance with FIA International Sporting Code, Appendix J, 252.7.7.

12.1.3 Window / Net

The use of silver or tinted film on the side and rear windows is permitted. Details are subject to FIA International Sporting Code, Appendix J, 253.11.

12.1.4 Crew safety equipment

Crews must wear all safety clothing and equipment, including driver's clothes, gloves, shoes, helmets, balaclavas, FHR helmets and FHRs homologated in accordance with International Sporting Code, Appendix L, Chapter 3. Each crew member's equipment will be checked during the Official Scrutineering and must be brought to the scrutineering area.

12.1.5 Noise level

Vehicles temporarily imported under the FIA Carnet and Customs Tariff Act must have noise levels below the standards of the country of registration. Vehicles registered in Japan must have noise levels below the safety standards of the Road Trucking Vehicle Law.

12.1.6 Special domestic conditions

The use of radios is not permitted.

12.1.7 Kill switch

Rally cars must be equipped with circuit breakers that conform to FIA International Sporting Code Appendix J, 253.14.

12.1.8 Fire extinguisher

Rally cars must be fitted with a fire extinguishing system in accordance with FIA International Sporting Code Appendix J, 253.7.

12.1.9 Items to be mounted on the rally cars

2 emergency stop signs (triangular), emergency signal light, red light, tow rope, first aid kit, A3 size "OK" and "SOS" cards (to be kept in an easily accessible position in the vehicle).

12.1.10 Installation of safety tracking systems.

The organiser will lend a special smartphone equipped with the RallyStream system for this rally.

12.1.11 Installation of on-board cameras

If an on-board camera is to be installed, an application form for the use of an on-board camera must be submitted at the time of registration. The camera must also be installed before the official scrutineering, regardless of whether the camera is installed inside or outside the car body. No filming is permitted without a permit sticker affixed by the vehicle inspector at the time of official scrutineering. The organisers retain the copyright of the images taken by these cameras and may be asked to submit the images to the organisers.

12.2 Official scrutineering (JRC)

12.2.1 Official scrutineering location and date

All participating vehicles must undergo an official scrutineering on 7 June (Fri) between 09:00 and 17:00 at the official scrutineering area (Annaka Shinkumi Sports Centre parking lot).

Rally cars that do not pass the scrutineering within the stipulated time will not be allowed to start. However, the Steward committee may give a correction time.

12.2.2 Crew safety equipment

Helmets and racing suits must be worn in accordance with the 2024 National Technical Regulations, Chapter 4, for the Equipment of Crews Participating in Rally Competitions. In addition, head and neck protection (FHR systems, HANS, etc.) must be fitted.

12.2.3 Items to be mounted on the competition vehicle

2 emergency stop signs (triangular), emergency signal light, red light, tow rope, first aid chemicals, fire extinguisher of the specifications stipulated in the 2024 JAF National Technical Regulations, Part 2, Chapter 2, Article 3 of the Rally Vehicle Rules, A3 size "OK" "SOS" card (to be placed in an easily accessible position in the vehicle).

12.2.4 Installation of safety tracking systems.

The organiser will lend a special smartphone equipped with the RallyStream system for this rally.

12.2.5 Installation of on-board cameras

If an on-board camera is to be installed, an application form for the use of an on-board camera must be submitted at the time of registration. The camera must also be installed before the official scrutineering, regardless of whether the camera is installed inside or outside the car body. No filming is permitted without a permit sticker affixed by the scrutineer at the time of official scrutineering.

The organisers retain the copyright of the images taken by these cameras and may be asked to submit images to the organisers.

12.3 Post-rally Scrutineering (APRC)

12.3.1 Post-rally Scrutineering Location and date

Location: parking lot of Annaka Shinkumi Sports Centre

Date: 9 June 2024 (Sunday) from around 16:30

12.4 Post-rally Scrutineering (JRC)

12.4.1 Post-rally Scrutineering Location and date

Location: parking lot of Annaka Shinkumi Sports Centre

Date: 9 June 2024 (Sunday) from around 16:45

12.5 Advertisements and rally plates

12.5.1 window

Advertisements on the vehicle body, including the roof, are permitted. However, advertising above the front window of a vehicle is only permitted on vehicles registered outside Japan. The size of the advertisement must not exceed 10 cm in height from the top edge of the front window and 8 cm in height from the top edge of the rear window.

12.5.2 Voluntary advertisement

Participants must reserve advertising space in accordance with Appendix 4 of the Supplementary Regulations.

12.5.3 Alcohol and tobacco advertising

In Japan, there are no restrictions on advertising on rally cars and uniforms, and the same applies to advertising on alcohol and tobacco.

12.6.4 Rally plates and numbers

APRC participants are supplied with a set of rally plates and number panels in accordance with 18 of the 2021 FIA Regional Rally Sporting Regulations. These must be affixed to the vehicle by the official scrutineering in accordance with the Supplementary Regulations. Failure to do so will result in a fine of JPY 54,000.

Japanese Rally Championship participants must affix the sticker to their vehicles by the time of the official scrutineering in accordance with the Supplementary Regulations.

Non-compliance will be reported to the Stewards.

13 Test Run

A test run will be held for the participants of this rally on the following dates and times. Details will be announced separately.

Date: 6 June (Thursday) 10:00 - 12:00/13:00 - 15:00

Place: Annaka City

Fee: Half day (2 hrs) ¥30,000 Full day (4 hrs) ¥50,000

14 Shakedown

This rally will not be conducted the Shakedown.

15 Start

Date 8 June 2024(Saturday) Car 1 from 8:30

Place Start area at the parking lot of the Annaka Shinkumi Sports Centre

Methods Start sequentially from TCO. The start interval will be indicated by the officials.

16 Finish

Date and time 9 June 2024 (Sunday) Car 1 from about 16:12

Place Parking lot of Annaka Shinkumi Sports Centre

Method Provisional awards will be presented at the finish podium to the top finishing teams (1st to 3rd) in their class in each category. Crews not eligible for awards will be directed to Parc Ferme by officials. Crews not eligible for other awards will be directed to Parc Ferme by officials.

17 Promotion

17.1 Rally parks

Date 8 (Sat) - 9 (Sun) June 2024

Venue Annaka Shinkumi Sports Centre

Details will be posted on the website.

* Spectator parking is not available at the Annaka Shinkumi Sports Centre. Please use the free shuttle bus from Annaka Station.

17.2 Media conferences

Date and time Friday 7 June 2024 17:30~18:00

Location. In Annaka Shinkumi Sports Centre Media Centre

Contents APRC and Japanese Rally Championship top crew press conference

17.3 Ceremonial start

See chapter 14 'Start'.

17.4 Ceremonial finish

See chapter 15 'Finish'.

17.5 Final press conference

Date and time 9 June 2024 (Sunday) 17:00~17:30

Location In Annaka Shinkumi Sports Centre Media centre

Contents Press conference of the APRC and Japanese Rally Championships' top finishing crews.

18 Media.

Pre-registration is required to cover MONTRE 2024.

To pre-register, please register by 16 May via the

[media page on the MONTRE2024 website.](#)

MONTRE Media Office (in NPO MOSCO Takasaki office)

2458-1, Kurgano-cho, Takasaki, Gunma 370-1201

tel 027-386-4365 / fax 027-386-4375

WEB site :<https://rally-montre.com/media>

E-Mail : media@rally-montre.com

Details of credentials and vehicle passes will be shown in later information and other publications.

*Opening hours of the media centre (tentative).

Friday 7 June 08:00 - 19:00

Saturday 8 June 07:00 - 19:00

Sunday 9 June 06:00 - 18:00

19 Health and safety services

19.1 Emergency services

Emergency contact details are as follows.

Fire and ambulance	119
Police	110

19.2 Medical facilities

Public Usui Hospital

1-9-10, Haramachi, Annaka, Gunma TEL : 027-385-8221

Internal medicine - surgery - neurosurgery - paediatrics - orthopaedic surgery - ophthalmology - otorhinolaryngology - urology Dermatology - Dentistry - Dental surgery

*Closed on Saturdays, Sundays and public holidays (no emergency department).

<https://usui-hospital.jp>



Fujioka Public General Hospital

813-1 Nakagurusu, Fujioka, Gunma TEL : 0274-22-3311

Internal medicine - Neurosurgery - Gastroenterology - Cardiology - Respiratory medicine - Haematology - Nephrology - Allergy - Rheumatology - Paediatrics - Surgery - Orthopaedics - Neurosurgery - Dental surgery - Plastic surgery - Dermatology – urology – obstetrics and gynaecology – ophthalmology – otorhinolaryngology – diagnostic radiology – radiotherapy - Anaesthesiology - Pathology - Emergency medicine

<http://www.fujioka-hosp.or.jp/>



Public Tomioka General Hospital

2073-1 Tomioka, Tomioka city TEL: 0274-63-2111
 Internal medicine - surgery - orthopaedic surgery -
 ophthalmology - paediatrics - urology - dermatology



<http://www.tomioka-hosp.jp>

*Because the day of the rally falls on a night or Saturday holiday, it is difficult to specify the right hospital for your symptoms. If you do not need an ambulance but would like to know which hospital is suitable for your symptoms, please contact

emergency telephone service

Takasaki City 027-325-0011

Fujioka-Tano region 0274-23-6699

Tomioka-Amara region 0274-64-0099

● Tertiary emergency (Emergency centre)

As a back-up hospital for initial (primary) and secondary emergency medical facilities, it accepts critically ill patients from medical facilities and emergency transport services 24 hours a day. Direct admission is not possible. (If emergency treatment is required, Rally HQ will arrange for an ambulance.

Independent Administrative Institution National Hospital Organisation Takasaki General Medical Centre
 36 Takamatsu-cho, Takasaki, Gunma, Japan

TEL : 027-322-5901 <https://takasaki.hosp.go.jp>



19.3 Towing service

A tow truck provided by the organisers will be stationed at each stage and in the event of a problem within the SS, the tow truck provided by the organisers will transport the vehicle outside the SS course (actual costs will be incurred). If you require transport other than the above, please contact Rally HQ.

20 General information

20.1 Annaka City area

20.1.1 Annaka City General Information

Annaka City Tourism Section, Department for the Creation of Moriori
245 Shinbori, Matsuida-cho, Annaka, Gunma 379-0292
TEL: 027-382-1111 FAX: 027-386-4111

<https://www.city.annaka.lg.jp/page/2054.html>

20.1.2 Accommodation guide

See accommodation information page below.

<https://www.city.annaka.lg.jp/page/2082.html>



20.2 Takasaki City area

20.2.1 Takasaki City General Information

Takasaki Tourist Association
222, Yashima-cho, Takasaki, Gunma 370-0849, Japan
TEL: 027-330-5333 FAX: 027-330-5334

Open: Mon-Fri 9:00 - 18:00 (closed Sat-Sun and public holidays)

<http://www.takasaki-kankoukyoukai.or.jp/takasaki/contact.php>

Mail: info@takakan.org

20.2.2 City Accommodation guide

See accommodation information page below.

-Takasaki Tourist Association Accommodation Guide

<http://www.takasaki-kankoukyoukai.or.jp/?cat=26>

Food and drink guide

See the restaurant information page below.

<https://zetsumeshi-takasaki.jp>

https://www.dan-b.com/shop_search/genre/1/?area_groupname%5B%5D=2&btn_Search.x=135&btn_Search.y=17&btn_Search=submit&lunch_from=&lunch_to=&dinner_from=&dinner_to=&generation=

20.3 Fujioka City area

20.3.1 Fujioka Tourist Association

Fujioka Tourist Association Secretariat (Fujioka City Commerce, Industry and Tourism Division)
327 Nakagurusu, Fujioka, Gunma 375-0015

TEL: 0274-40-2317 Fax: 0274-24-4414

<http://www.fujioka-kanko.net>

Mail: syoko@city.fujioka.gunma.jp

20.3.2 Fujioka Tourist Information Centre

1131-8 Naka, Fujioka-shi, Fujioka (in Raran Fujioka Tourist Product Centre, Roadside Station)

Opening hours.

Weekdays 9.30 am - 6 pm

Saturdays, Sundays and public holidays 9.30 am - 7.30 pm

TEL: 0274-50-9933 fax: 0274-50-9934

Mail: fuji-kanko@blue.ocn.ne.jp

20.4 Tomioka City area

20.4.1 Tomioka City General Information

Tomioka Tourist Association

1151-1, Tomioka, Tomioka, Gunma 370-2316,

Machinaka Tourist Products Museum "Otomi-chan-ke (chi)"

tel: 0274-62-6001 fax: 0274-67-7775

Open: 9:00 - 17:00 <http://www.tomioka-silk.jp>

20.5 Kanna town area

20.5.1 General information on the town of Kanna

Kanna Town Tourist Association

40 Manba, Kannuru-cho, Tano County, Gunma Prefecture (in Koikoi Kaikan)

TEL: 0274-57-3305

http://town.kanna.gunma.jp/kanko/?nc_session=sc0fit3qg3dgniti09t8n3efm4

20.5.2 Town guide Accommodation guide

See accommodation information page below.

http://town.kanna.gunma.jp/kanko/?page_id=23

Restaurant Guide.

See the restaurant information page below.

http://town.kanna.gunma.jp/kanko/?page_id=24

20.6 Ueno Village Area

20.6.1 Ueno Village General information

Ueno Village Industrial Information Centre (tourism enquiries)
 310-1 Oaza Narahara, Ueno-mura, Tano District, Gunma 370-1617
 TEL 0274-20-7070 fax 0274-59-2520
<http://www.uenomura.jp/tourism/>

20.6.2 Village guide Accommodation guide

See accommodation information page below.
<http://www.uenomura.jp/tourism/stay/index.html>
 Restaurant Guide.
 See the restaurant information page below.
<http://www.uenomura.jp/tourism/eat/index.html>

20.7 Nanmoku Village area

20.7.1 General information on Nanmoku Village

Nanmoku Village Promotion and Development Department
 tel 0274-87-2011 fax 0274-87-3628
<http://www.nanmoku.ne.jp>

20.7.2 Guide to the village

-Accommodation information

Name	uniform resource locator	TEL	amount	Remarks.
Okashira	http://okashira.com	0274-87-2066		6,500 yen (excluding tax) per night with 2 meals
guest house Kawakubo		0274-87-3139		6,500 yen (excluding tax) per night with 2 meals
Guest house Tsukigataen		0274-87-2698		6,500 yen (excluding tax) per night with 2 meals
Kajika Club,	http://www.inakajin.net	0274-87-2181		8,000 yen (excluding tax) per night with 2 meals

Restaurants	address	TEL	Remarks.
Inoue Udon Noodle	Nanmokumura, Oaza Ohinata 1478	0274-87-2541	11:00 - 19:00 (closed on Mondays)
Chitoseya	Nanmokumura, Oaza Ohinata 1121.	0274-87-2136	confirmation required
Chitoseya Restaurant	Nanmokumura Oaza Bando 141	0274-87-2027	11:30 - 14:30 17:00 - 20:00 (closed on Weds)

21 Useful information - List of services

21.1 Special stages

As of 10/05/2024 (planned)

SS No.	SS Name	SS Distance.
SS1/5	ShionosawaTouge	8.00 km
SS2/6	Youkura Touge	14.90 km
SS3/4	OldUsuiTouge	9.10 km
SS7/9	Sakamaru.	7.56 km
SS8/10	Grandma Kimura	12.77 km

The Gallery Stage will only be held on SS3.4 Old Usui Touge (Old Usui Pass) on Saturday 8 (free of charge)
There is no parking, so please walk (100-125 mins) from Yokogawa Station or take the trolley train (700 yen - 1 train every hour) in the Railway Culture Village (admission 700 yen) + walk (45-70 mins).

21.2 Inquiries for sponsorship and stalls in the Rally Park

For sponsors and for those wishing to set up stalls in the Rally Park, please contact the following. For further information, please check the Rally Guide 2 and the official website.

CINQ INC.

5-5-21-202 Futago, Takatsu-ku, Kawasaki, Kanagawa 213-0002, Japan
tel 044-850-5115 / fax 044-850-5116 e-mail : info@cinq-5.co.jp

21.3 Trains.

To reach Annaka City, where the Service Park is located, take the Ueno Tokyo Line or Joetsu Shinkansen from Tokyo Station to Takasaki Station. From Takasaki, take the Shin-Etsu Main Line (direction Yokogawa) for three stops. It takes about 1.5 hours by Shinkansen and 2.5 hours by local train. From Annaka Station, on Saturdays and Sundays, a free shuttle bus takes you to the Annaka Shin Kummi Sports Centre, where the Service Park - Rally Park is located.

21.4 Time zones.

Japan's time zone is JST; UTC(GMT) +9 hours. -2 hours from New Zealand.

21.5 Sunrise/sunset.

Sunrise/sunset in Annaka on 7 June is 4:27/19:00.

21.6 Average temperature

Maximum temperature 25°C / Minimum temperature 17°C

21.7 Currency

The currency is the Japanese yen (JPY/¥). Banknotes and coins are easily identified. Banknotes of ¥1,000, ¥2,000, ¥5,000 and ¥10,000; coins of ¥1, ¥5, ¥10, ¥50, ¥100 and ¥500. Exchange starts at 8 May:

1€ = approx. 167 yen / 1US \$ = approx. 155 yen / 1 £ = approx. 195 yen / 1NZD = approx. 93 yen / 1AUD = approx. 102 yen. As there are only a limited number of banks in Annaka where foreign currency can be exchanged, it is recommended that currency be exchanged at the airport.

21.8 Taxes

Japan's consumption tax (standard rate) is 10%. Alcoholic beverages - the reduced tax rate for certain foodstuffs, excluding food service, is 8%. All price tags are required to display the total amount including tax, although in practice this is not the case for some items.

21.9 Tip.

Tipping is not customary in Japan.

21.10 Electricity

The voltage commonly used in Japan is 100 volts and the frequency in Aichi Prefecture is divided into 50 Hz and 60 Hz regions. The plug is type A, the same as in the USA and Canada.

21.11 Mobile phones

Many recent mobile phones can be used in Japan, but older mobile phones may not work. GSM-only mobile phones cannot be used in Japan as there is no GSM network in the country.

21.12 Embassies

Check the website of the Japanese Ministry of Foreign Affairs.

Foreign missions in Japan : www.mofa.go.jp/about/emb_cons/protocol/index.html

Embassies - consulates: www.mofa.go.jp/about/emb_cons/over/index.html

21.13. Visas and border control.

Although entry to Japan was restricted for a time due to COVID-19, most restrictions have been eased as of 2024/5, with 71 countries and territories exempt from visa requirements as usual. In addition, vaccination and pre-departure inspection certificates are no longer required. For more information, see the website of the Ministry of Health, Labour and Welfare.

[Ministry of Health, Labour and Welfare Ministry of Foreign Affairs Visa waiver](#)

Appendix 1 ITINERARY

Leg 1.

Version 04-10 - 28 April 2024

Start (Section 1 / 2)		Saturday, 8 June 2024			(Sunrise 4:26, Sunset 19:02)	
TC	LOCATION.	SS DIST.	Liaison DIST.	Total DIST.	Target. time	First car due
0	Rally Start (Annaka Shinkumi Sports Centre)					8:30
	Start no Refuel. distance to next refuel.	(23.70)	(99.94)	(123.64)		
1	Hisawa.		41.15	41.15	1:15	9:45
SS1.	Shionosawa Touge I	8.80				9:48
2	Sumouzuku		17.60	26.40	0:45	10:33
SS2.	Youkura Touge I	14.90				10:36
RZ	Refuel - Gas Station (Cosmo Oil New Motoyado SS)		[41.19]		(1:34)	(12:10)
1	Distance to next refuel	(18.20)	(95.25)	(113.45)		
3	Prefectural Border		63.89	78.79	2:10	12:46
SS3	Old Usui Touge I	9.10				12:49
Three A.	Regroup & Technical Zone IN		20.91	30.01	0:45	13:34
threeB	Regroup & Technical Zone OUT / Flexi Service IN					
	Flexi Service A (Annaka Shinkumi Sports Centre)	(32.80)	(143.55)	(176.35)	0:20	
3C	Flexi Service OUT / Regroup IN					
three dimensional	Regroup OUT					14:34
4	Prefectural Border		37.17	37.17	1:10	15:44
SS4	Old Usui Touge II	9.10				15:47
RZ	Refuel - Gas station (ENEOS Wing Annaka downstream TS) Distance to next refuel	(23.70)	[14.47]	(128.89)	(0:39)	(16:26)
5	Hisawa.		46.35	55.45	1:30	17:17
SS5.	Shionosawa Touge II	8.80				17:20
6	Sumouzuku		17.60	26.40	0:45	18:05
SS6	Youkura Touge II	14.90				18:08
RZ	Refuel - Gas station (ENEOS Wing Annaka downstream TS) Distance to next refuel	(7.85)	[55.71]	(76.93)	(2:07)	(20:15)
6A	Parc Fermé & Technical Zone IN		65.70	80.60	2:25	20:33
6B	Parc Fermé OUT - Flexi Service IN					
	Flexi Service B (Annaka Shinkumi Sports Centre)	(32.80)	(166.82)	(199.62)	0:45	
6C	Flexi Service OUT / Over Night Parc Fermé IN (Early check in allowed)					
	For all cars, TC6C will close at -					(23:30)
Saturday totals		65.60	310.37	375.97		

Section 1.

Section 2.

Note 1 : At the 20min service, the crew have a max. mum of 25 min to move their cars into the Service Park. **Note 2 :** At the 45min service, the crew have a maximum of 50 min to move their cars into the Service Park.

Re-Start (Sections 3 / 4)	Sunday 9 June 2024	TC LOCATION
---------------------------	--------------------	-------------

Service C (Annaka Shinkumi Sports Centre)				0:15	
6E	Service OUT				6:15
7	Aonashi.	55.07	55.07	1:40	7:55
SS7	Sakamaru I.	7.85			7:58
RZ	Refuel - Gas Station (ENEOS Mikabo Oil Kaminarimachi	[4.02]		(0:23)	(8:21)
4	SS) Distance to next refuel	(20.31)	(112.34)	(132.65)	
8	Mt W-Mikabo.	11.60	19.45	0:45	8:43
SS8	Grandma.Kimura I	12.46			8:46
8A	Regroup & Technical Zone IN	45.41	57.87	1:45	10:31
8B	Regroup & Technical Zone OUT / Flexi Service IN				
Flexi Service D (Annaka Shinkumi Sports Centre)				(20.31) (112.08) (132.39) 0:20	
8C	Flexi Service OUT / Regroup IN				
8D	Regroup OUT				11:31
PC	Kanra Cultural Hall Parking	(17.06)		(0:40)	(12:11)
9	Aonashi.	55.33	55.33	1:45	13:16
SS9	Sakamaru II	7.85			13:19
RZ	Refuel - Gas Station (ENEOS Mikabo Petroleum Kannuru-	[4.02]		(0:22)	(13:41)
5	cho SS) Distance to end of rally	(12.46)	(52.99)	(65.45)	
10	Mt W-Mikabo.	11.60	19.45	0:45	14:04
SS10.	Grandma.Kimura II	12.46			14:07
10A	Technical Zone IN	45.41	57.87	1:45	15:52
10B	Technical Zone OUT			0:10	16:02
Service E (Annaka Shinkumi Sports Centre)				(20.31) (112.34) (132.65) 0:10	
10C	Service OUT - Finish Holding Area IN (Early check in allowed)				16:12
	Podium Finish - Holding IN			(0:05)	(16:17)
	Final Parc Fermé IN				
Sunday totals		40.62	224.42	265.04	

Section 4.

Note 1 : At the 20min service, crews have a maximum of 25 min to move their cars into the Service Park.

Totals of the Rally		SS	Liaison	Total	%
Saturday	6SS	65.60	310.37	375.97	17.4
Sunday	4SS	40.62	224.42	265.04	15.3
Total	10SS	106.22	534.79	641.01	16.6

Note: Tyre Warming Zones are not included in the distances.

Appendix 2 MAP

Service Park and HQ Layout

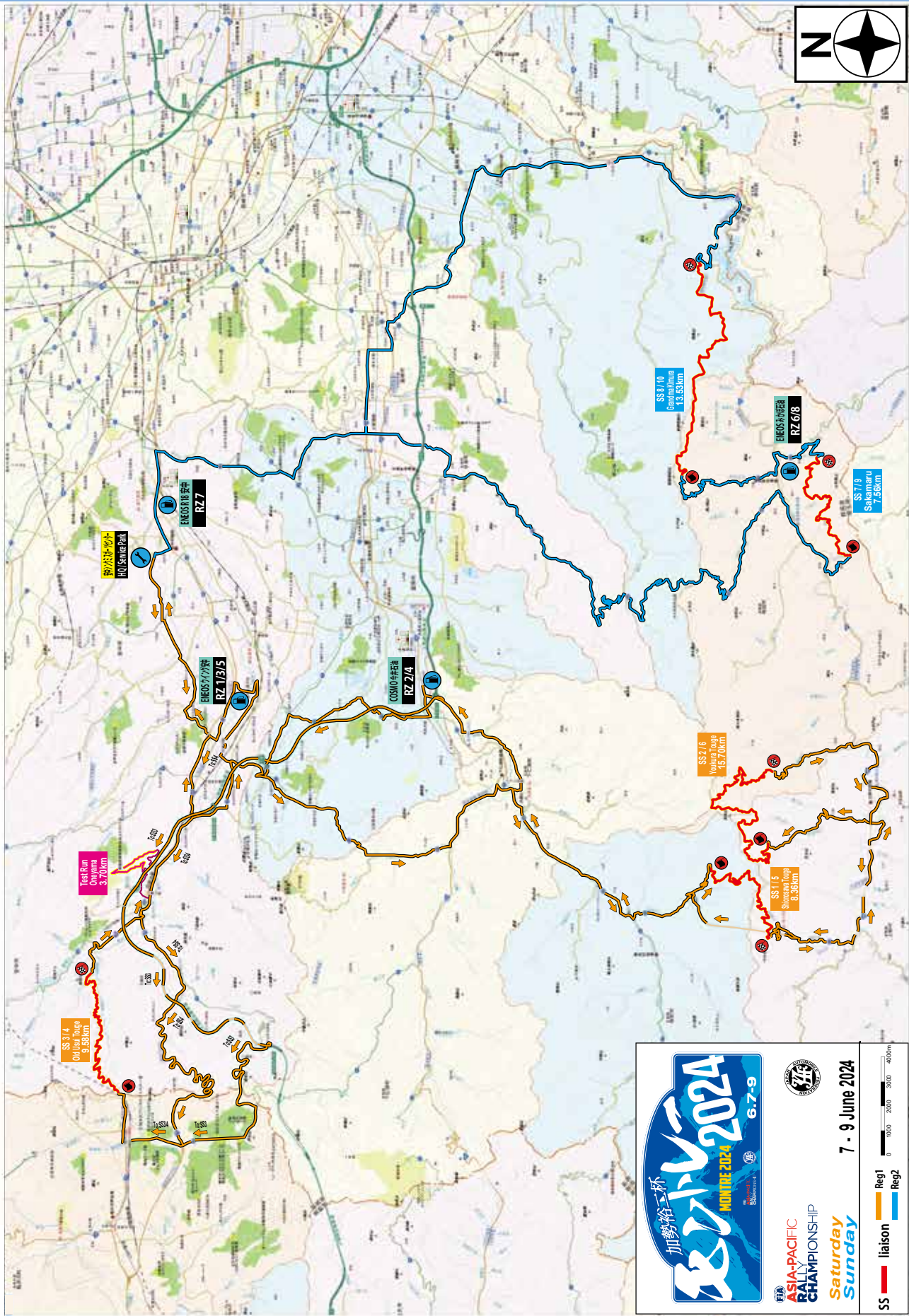
Start Leg0 (Section 0) 19:02		Friday, 7 June 2024 (Sunrise 4:26,Sunset 19:02)				
TC	LOCATION	SS dist.	Liaison dist.	Total dist.	Target time	First car due
0	Rally Start (AnnakaShinkumiSportsCenter)	-	-	-	-	5:30
8/10	Mt.W-Mikabo	-	45.12	45.12	1:30	7:00
SS8/10	Grandma.Kimura I/II	12.46	-	-	-	7:03
7/9	Aonashi	-	21.65	34.11	0:55	7:58
SS7/9	Sakamaru I/II	7.85	-	-	-	8:01
8/10	Mt.W-Mikabo	-	11.91	19.76	0:36	8:37
SS8/10	Grandma.Kimura I/II	12.46	-	-	-	8:40
7/9	Aonashi	-	21.65	34.11	0:55	9:35
SS7/9	Sakamaru I/II	7.85	-	-	-	9:38
2/6	Sumouzuku	-	28.71	36.56	0:56	10:34
SS2/6	Youkura Touge I/II	14.90	-	-	-	10:37
2/6	Sumouzuku	-	15.97	30.87	0:45	11:22
SS2/6	Youkura Touge I/II	14.90	-	-	-	11:25
1/5	Hisawa	-	25.32	40.22	0:55	12:20
SS1/5	Shionosawa Touge I/II	8.80	-	-	-	12:23
1/5	Hisawa	-	9.35	18.15	0:26	12:49
SS1/5	Shionosawa Touge I/II	8.80	-	-	-	12:52
3/4	PrefecturalBorder	-	47.82	56.62	1:23	14:15
SS3/4	OldUsuiTouge I/II	9.10	-	-	-	14:18
3/4	PrefecturalBorder	-	28.42	37.52	0:53	15:11
SS3/4	OldUsuiTouge I/II	9.10	-	-	-	15:14
6A	Service IN	-	20.61	29.71	0:45	15:59
Reconnaissance totals		106.22	276.53	382.75		

Friday, 7 June 2021

Stage Open Time			Stage Name	Stage No.	traversable frequency	Distance [km]
PRC/JN1	JN2/JN3	JN4-6/other				
6:30~8:30	7:00~9:00	7:30~9:30	Grandma. Kimura	SS8/SS10	2	12.46
7:30~9:30	8:00~10:00	8:30~10:30	Sakamaru	SS7/SS9	2	7.85
10:00~12:00	10:30~12:30	11:00~13:00	Youkura Touge	SS2/SS6	2	14.90
12:00~14:00	12:30~14:30	13:00~15:00	Shionosawa Touge	SS1/SS5	2	8.80
13:30~16:00	14:00~16:30	14:30~17:00	OldUsui Touge	SS3/SS4	2	9.10

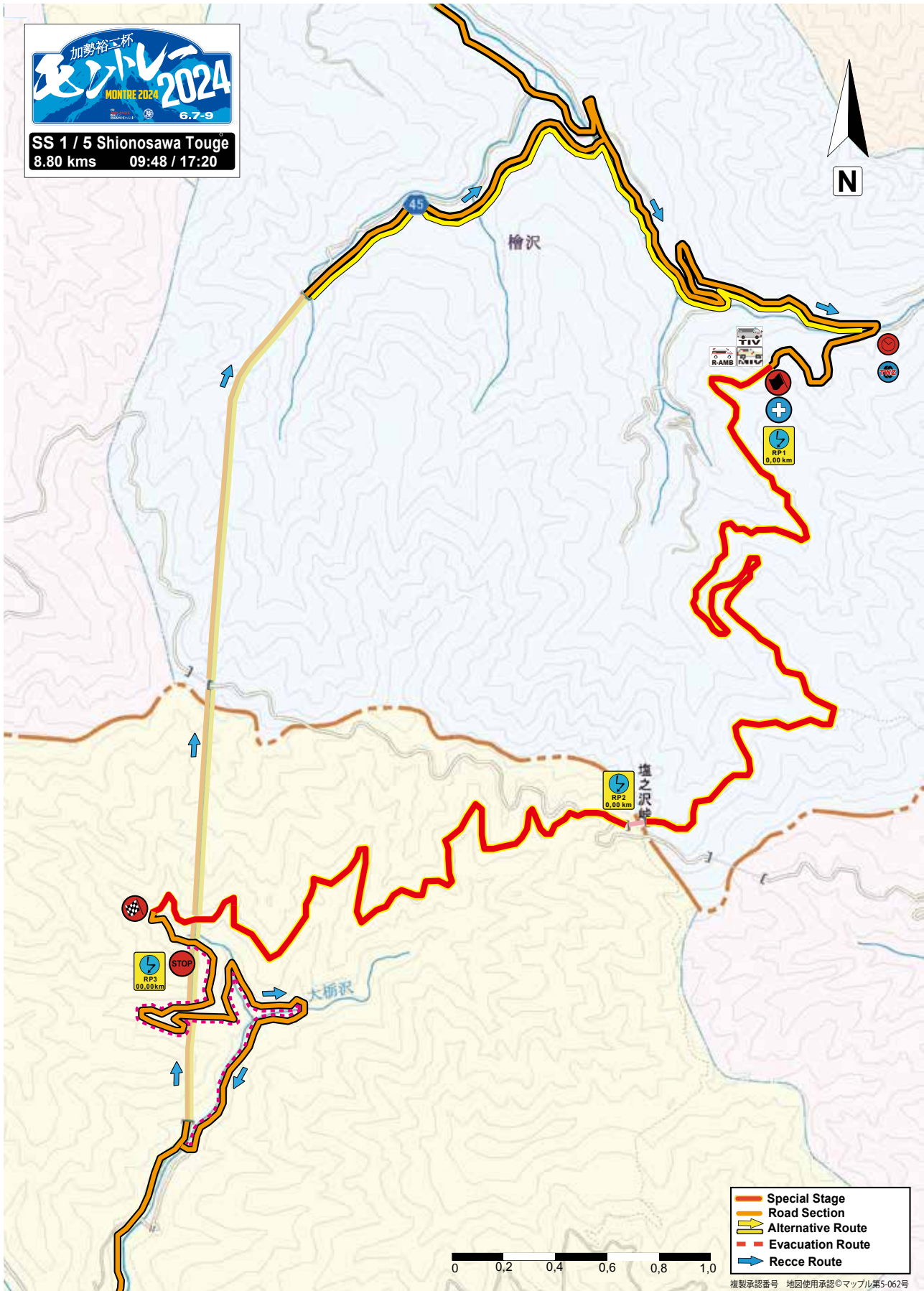
附則 2 マップ

Overall Map



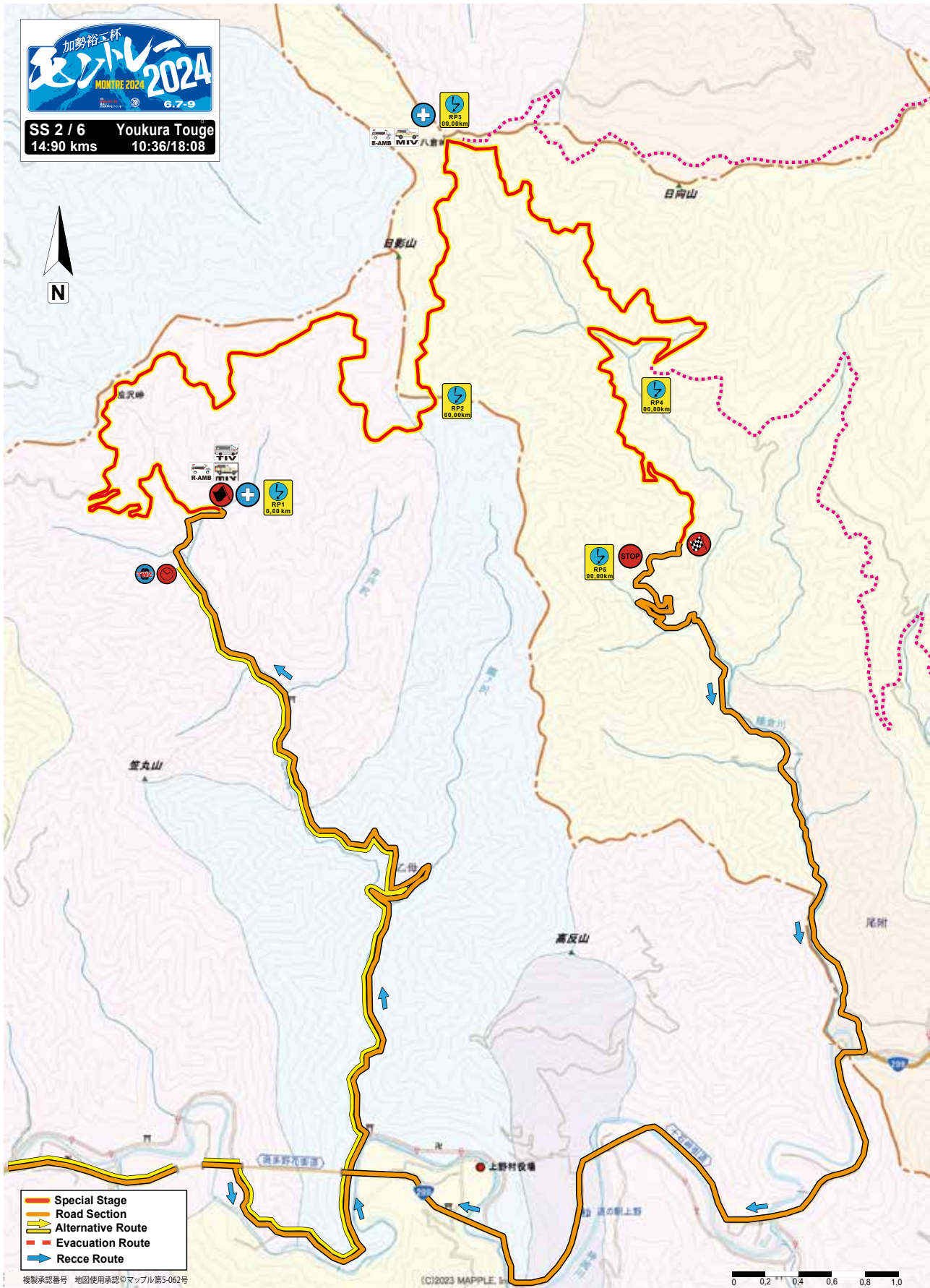
附則 2 マップ

SS1/5 Shionosawa Touge



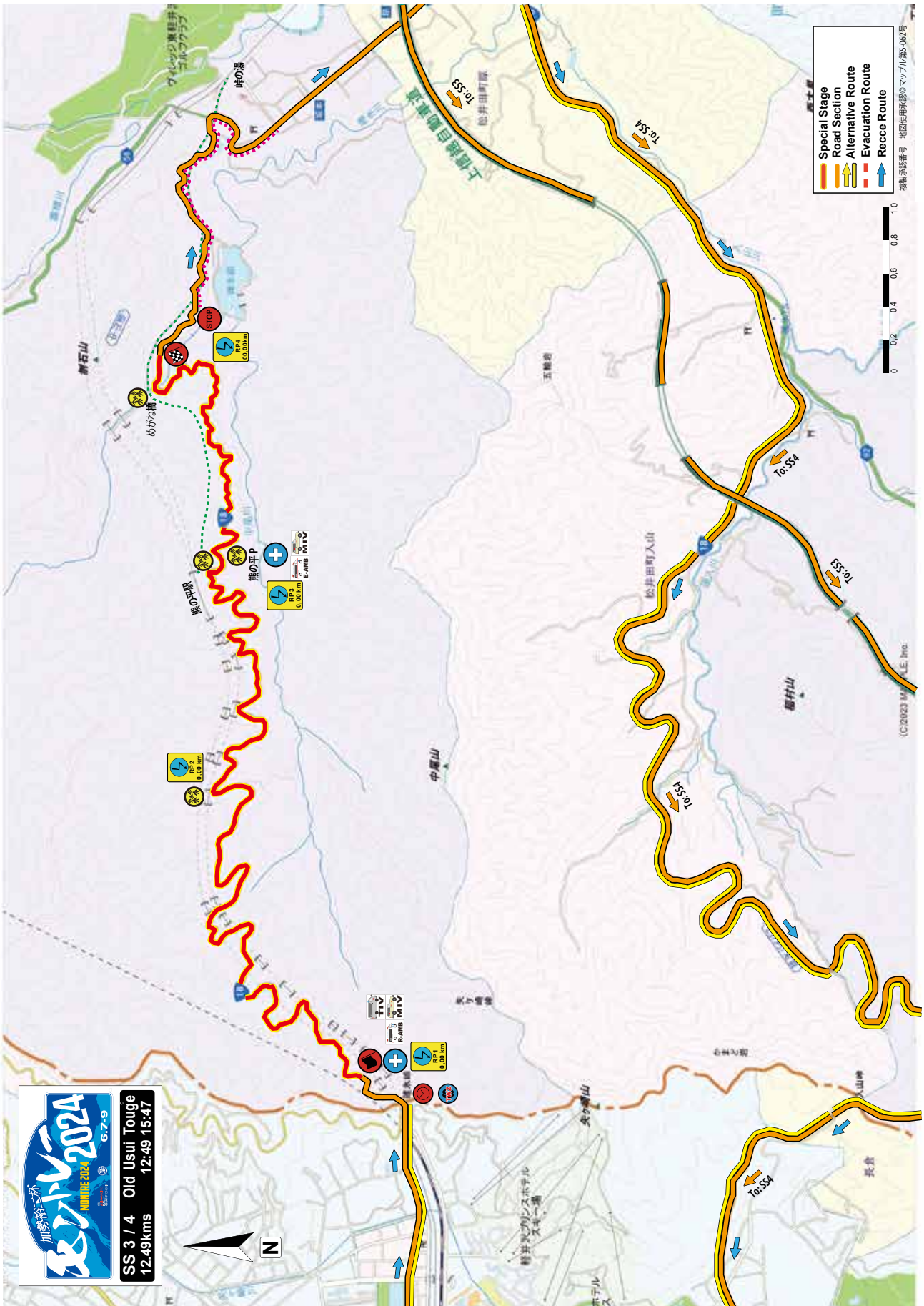
附則 2 マップ

SS2/6 Youkura Touge



附則 2 マップ

SS3/4 Old Usui Touge

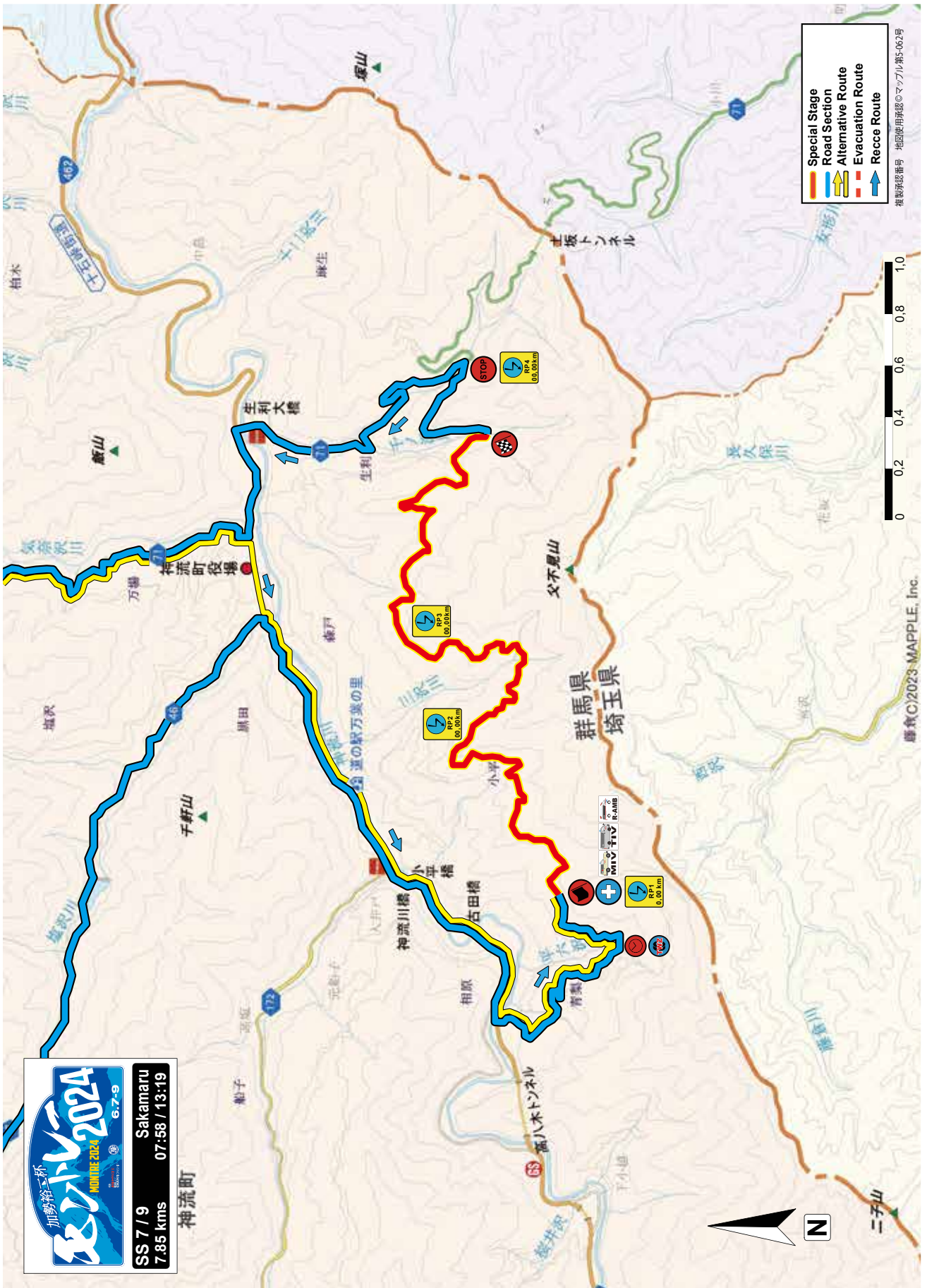


加勢杯
RALLYE 2024
6.7-9

SS 3 / 4 Old Usui Touge
12.49kms
12:49 15:47

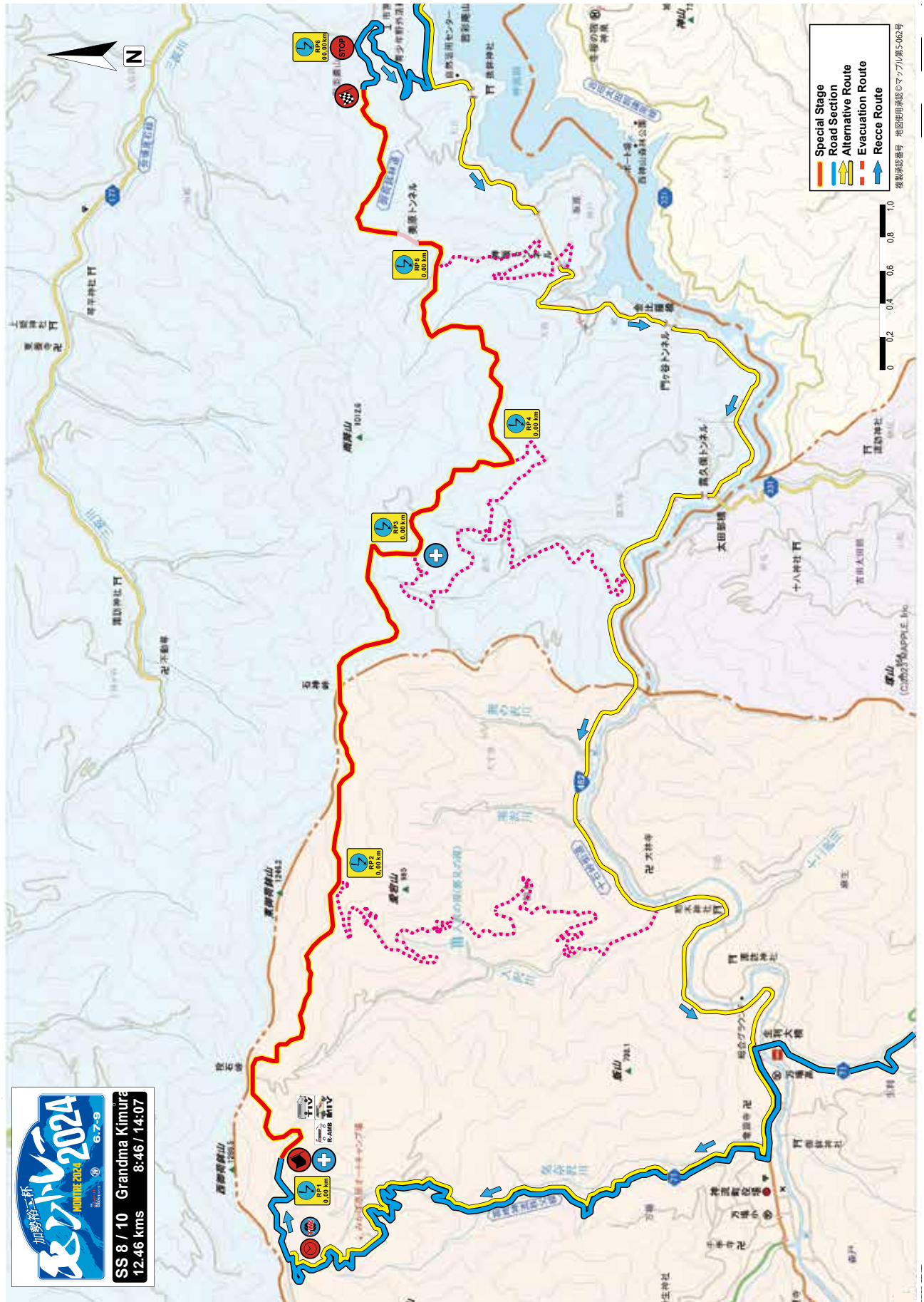
附則 2 マップ

SS7/9 Sakamaru



附則 2 マップ

SS8/10 Grandma Kimura



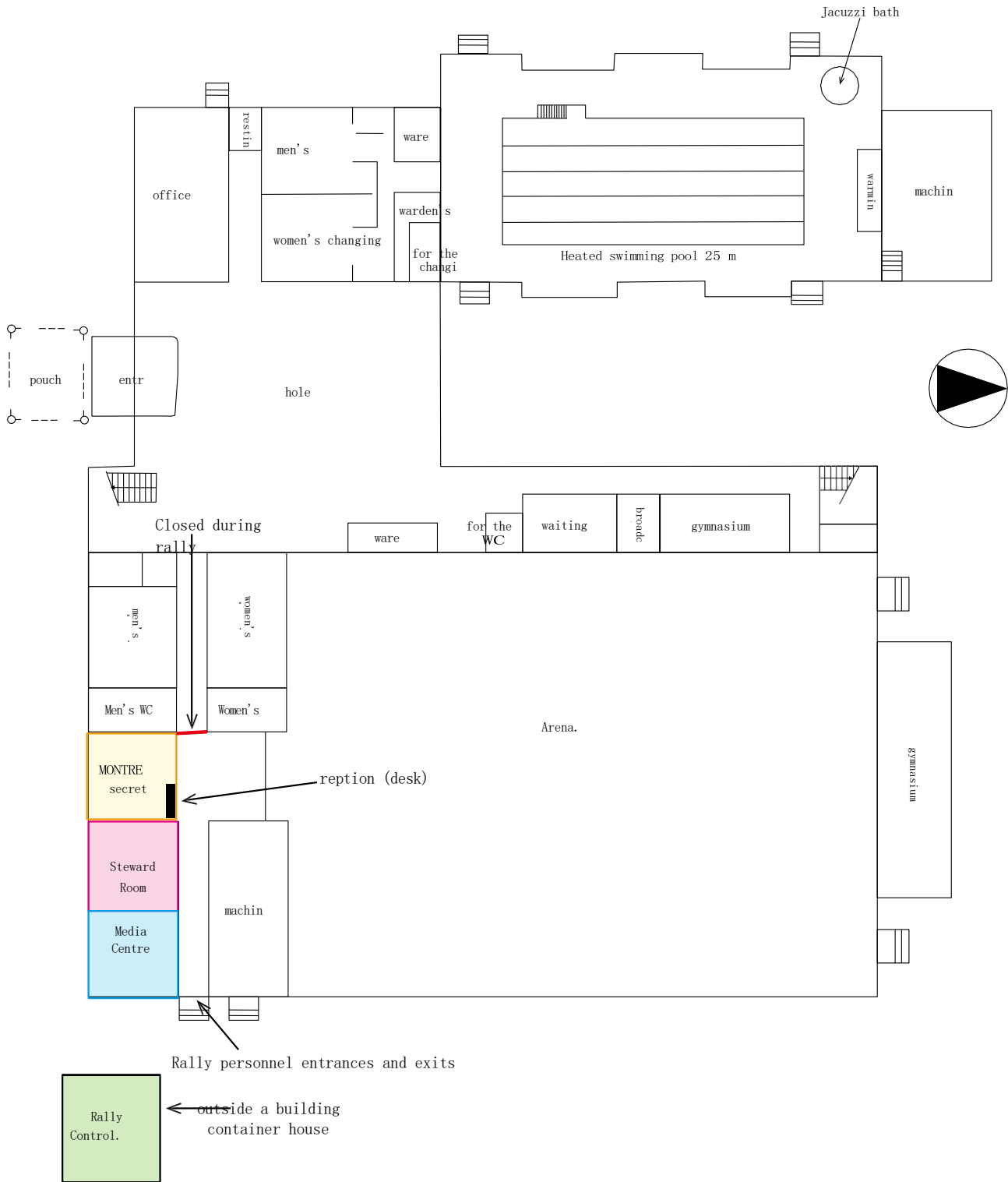
Appendix 2 MAP

Service Park and HQ Layout



Appendix 2 MAP

HQ Layout



Appendix 3 OTHER

Credentials



NAME

NAME

NAME



NAME

NAME

